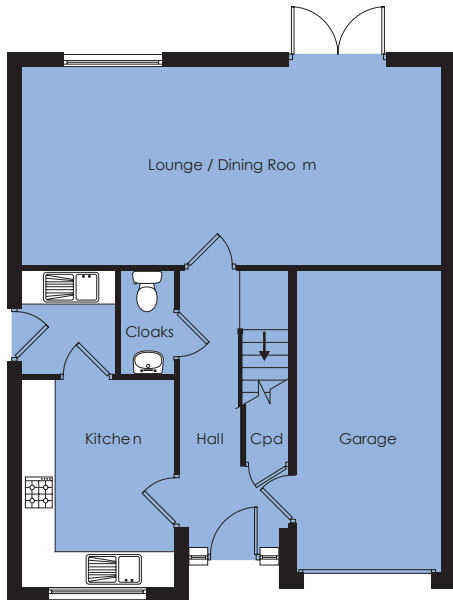


The Calder

4 bedroom, 2 storey house

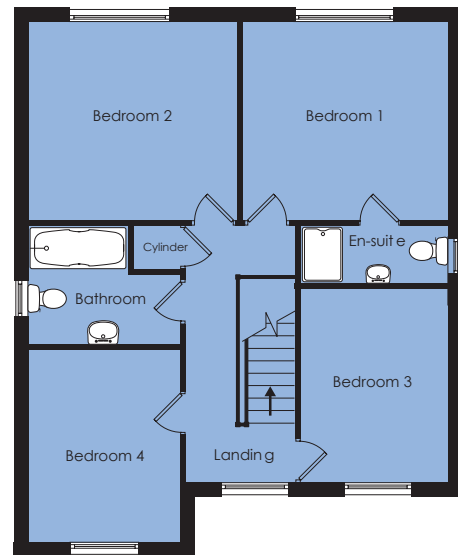


Sales and information centre off Cranfleet Way,
Long Eaton, Nottinghamshire NG10 3RJ
Telephone: 0115 946 8363
Email: sales@westermanhomes.co.uk



Ground Floor

Lounge	7.39m x 3.45m	24'3" x 11'4"
Kitchen	2.65m x 3.63m	8'8" x 11'11"
Utility	1.82m x 1.63m	6'0" x 5'4"
Cloaks	0.92m x 1.82m	3'0" x 6'0"
Garage	2.56m x 5.38m	8'5" x 17'8"



First Floor

Bedroom 1	3.59m x 3.43m	11'9" x 11'3"
En-suite	2.59m x 1.00m	8'6" x 3'3"
Bedroom 2	3.70m x 3.43m	12'2" x 11'3"
Bedroom 3	2.58m x 3.51m	8'6" x 11'5"
Bedroom 4	2.65m x 3.38m	8'8" x 11'1"
Bathroom	2.65m max x 2.13m	8'8" max x 7'0"

The depicted Calder and surrounding landscape is not an exact representation of the actual plot(s) available. Please refer to the Sales Advisor for full details of housetype specifications and available plot locations. All room dimensions are approximate and should not be used for carpet sizes, appliance or furniture spaces. This leaflet has been produced for guidance purposes only and the information supplied will not form part of any contract or constitute any offer, representation or warranty. Westerman reserve the right to amend the layout, external finishes and interior specification details without prior notice.

