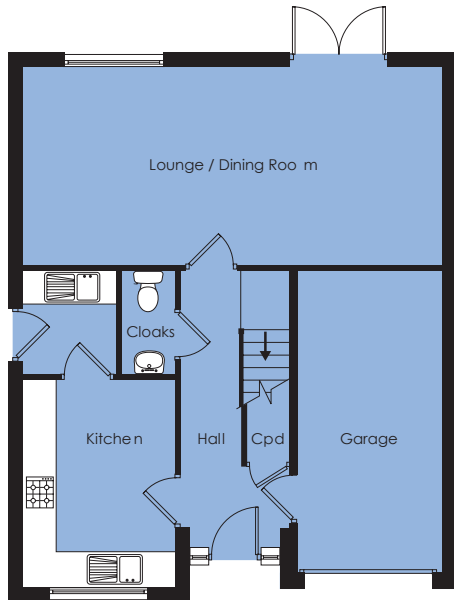


The Coleshill

4 bedroom, 2 storey house

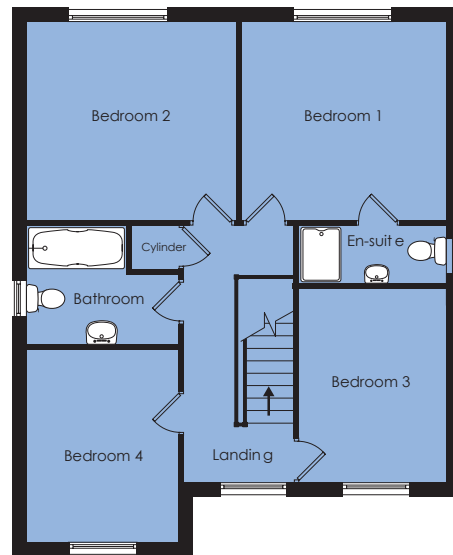


Sales and information centre off Cranfleet Way,
Long Eaton, Nottinghamshire NG10 3RJ
Telephone: 0115 946 8363
Email: sales@westermanhomes.co.uk



Ground Floor

Lounge	7.39m x 3.45m	24'3" x 11'4"
Kitchen	2.65m x 3.63m	8'8" x 11'11"
Utility	1.82m x 1.63m	6'0" x 5'4"
Cloaks	0.92m x 1.82m	3'0" x 6'0"
Garage	2.56m x 5.38m	8'5" x 17'8"



First Floor

Bedroom 1	3.59m x 3.43m	11'9" x 11'3"
En-suite	2.59m x 1.00m	8'6" x 3'3"
Bedroom 2	3.70m x 3.43m	12'2" x 11'3"
Bedroom 3	2.58m x 3.51m	8'6" x 11'5"
Bedroom 4	2.65m x 3.38m	8'8" x 11'1"
Bathroom	2.65m max x 2.13m	8'8" max x 7'0"