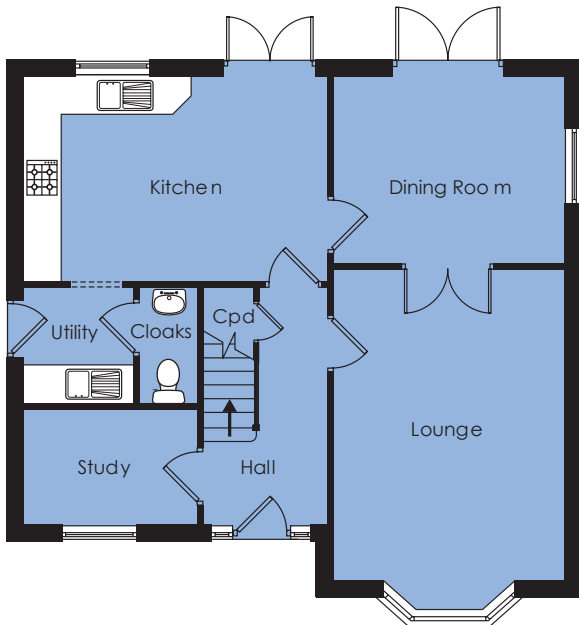


# The Hampton

4 bedroom, 2 storey house

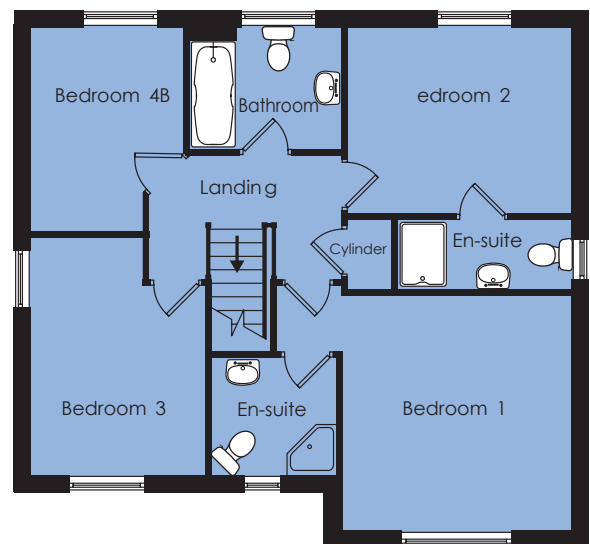


Sales and information centre off Cranfleet Way,  
Long Eaton, Nottinghamshire NG10 3RJ  
Telephone: 0115 946 8363  
Email: sales@westermanhomes.co.uk



## Ground Floor

Lounge	3.65m x 4.97m + bay	12'0" x 16'4" + bay
Dining	3.65m x 2.98m	12'0" x 9'9"
Kitchen	4.85m x 3.25m	15'11" x 10'7"
Utility	1.74m x 1.85m	5'8" x 6'1"
Study	2.77m x 1.79m	9'1" x 5'10"
Cloaks	0.93m x 1.85m	3'0" x 6'1"



## First Floor

Bedroom 1	3.65m min x 3.76m	12'0" min x 12'4"
En-suite	2.77m x 1.11m	9'1" x 3'8"
Bedroom 2	3.58m x 2.98m	11'9" x 9'9"
En-suite	2.77m x 1.10m	9'1" x 3'7"
Bedroom 3	2.97m x 3.77m max	9'9" x 12'4" max
Bedroom 4	2.43m x 3.28m max	8'0" x 10'8" max
Bathroom	2.44m x 1.90m	8'0" x 6'3"

The depicted Hampton and surrounding landscape is not an exact representation of the actual plot(s) available. Please refer to the Sales Advisor for full details of house type specifications and available plot locations. All room dimensions are approximate and should not be used for carpet sizes, appliance or furniture spaces. This leaflet has been produced for guidance purposes only and the information supplied will not form part of any contract or constitute any offer, representation or warranty. Westerman reserve the right to amend the layout, external finishes and interior specification details without prior notice.

