

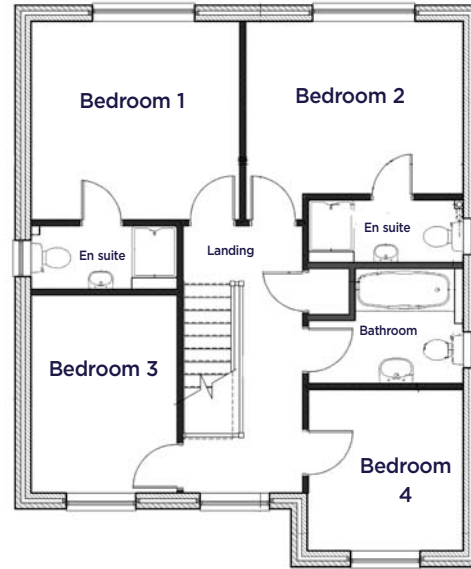
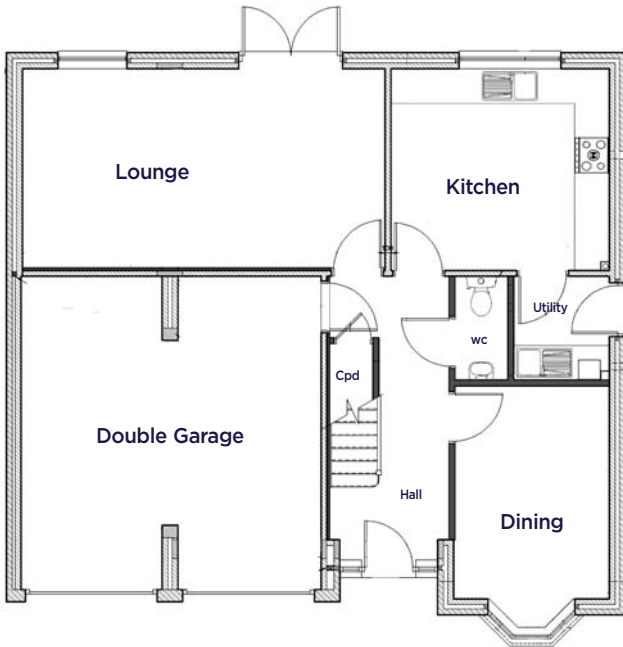


Morley GARDENS

RADCLIFFE ON TRENT - NOTTINGHAMSHIRE

Moberry

4 bedroom detached house: lounge with separate dining room / kitchen with a range of integrated appliances / 4 bedrooms with en suite to both master bedroom & bedroom 2 / separate family bathroom / double garage

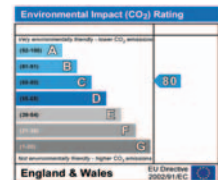
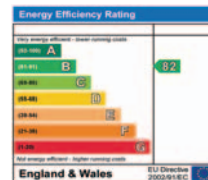


Ground Floor

Lounge	6.24m (20' 6") x 3.43m (11' 3")
Kitchen	3.73m (12' 3") x 3.45m (11' 4")
Dining	2.65m (8' 8") x 3.67m (12' 0")
Double Garage	5.20m (17' 1") x 5.39m (17' 8")
WC	0.93m (3' 0") x 1.80m (5' 10")

First Floor

Bedroom 1	3.60m (11' 10") x 3.43m (11' 3")
En suite	2.50m (8' 2") x 1.11m (3' 8")
Bedroom 2	3.75m (12' 4") x 3.00m (9' 10")
En suite	2.66m (8' 9") x 1.08m (3' 6")
Bedroom 3	2.50m (8' 2") x 3.42m (11' 3")
Bedroom 4	2.66m (8' 9") x 2.78m (9' 1")
Bathroom	2.66m (8' 9") x 2.78m (6' 7")



Sales and Information Centre
 97 Bingham Road, Radcliffe on Trent
 Nottinghamshire NG12 2GP
 Telephone: 0115 822 9400
 email: sales@westermanhomes.co.uk
 www.westermanhomes.co.uk

The information contained within these sales particulars should not be relied upon as statements or a representation of fact. Prospective purchasers should note that any elevations, room sizes/layouts have been taken from plan and may vary as construction takes effect. Any plans shown are for guidance purposes only. Any specification shown is correct at the time of printing. Prospective purchasers are advised to confirm such details before entering into a binding contract and are also advised to check availability with the local office prior to making a journey. The photographs of bathrooms and kitchens are purely representative of the quality of finishes intended to be used within the properties. A full list of actual bathroom suites and kitchen units, appliances and finishes can be obtained at a later stage of construction. Clients reserving a property at an early stage may be able to make some choices in the final finishes but this is entirely at the developers discretion, is subject to stage of build and by separate negotiation. The watercolour impression is an artist's impression and should not be relied upon as a statement of fact in terms of final appearance or precise layout.